

CircHAS2/RPL23/MMP9 axis facilitates brain tumor metastasis

Supplementary Table 1. The sequences of siRNAs targeting circHAS2

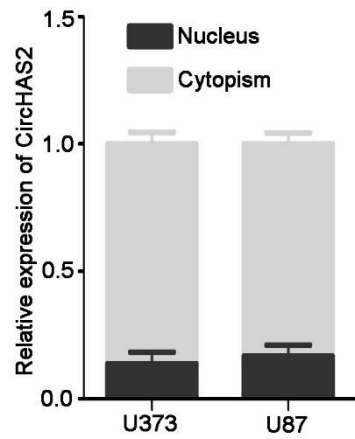
Sense	Antisense
siRNA1 5'-GUGGAUUAUGUACAGAUGCTT-3'	5'- GCAUCUGUACAUAUAUCCACTT-3'
siRNA2 5'-GAUUAUGUACAGAUGCAUUTT-3'	5'-AAUGCAUCUGUACAUAUAUUCTT-3'

Supplementary Table 2. The amino acid and probe sequence of circHAS2

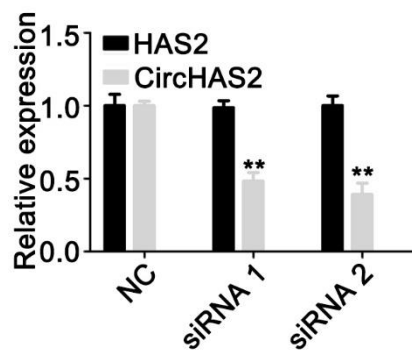
CircHAS2	ATGCATTGTGAGAGGTTTCTATGTATCCTGAGAATAATTGGAACCAC ACTCTTTGGAGTCTCTCTCCTCCTTGGGAATCACAGCTGCTTATATTG TTGGCTACCAGTTTATCCAAACGGATAATTACTATTTCTCTTTTGGGA CTGTATGGTGCCTTTTTTGGCATCACACCTCATCATCCAAAGCCTGTT TGCCTTTTTTGGAGCACCGAAAAATGAAAAAATCCCTAGAAACCCC CATAAAGTTGAACAAAACAGTTGCCCTTTGCATCGCTGCCTATCAA GAAGATCCAGACTACTTAAGGAAATGTTTGCAATCTGTGAAAAGG CTAACCTACCCTGGGATTAAAGTTGTCATGGTCATAGATGGGAACT CAGAAGATGACCTTTACATGATGGACATCTTCAGTGAAGTCATGGG CAGAGACAAATCAGCCACTTATATCTGGAAGAACAACCTCCACGA AAAGGGTCCCGGTGAGACAGATGAGTCACATAAAGAAAGCTCGC AACACGTAACGCAATTGGTCTTGTCCAACAAAAGTATCTGCATCAT GCAAAAATGGGGTGGAAAAAGAGAAGTCATGTACACAGCCTTCA GAGCACTGGGACGAAGTGTGGATTATGTACAG			
probe sequence	5'-CY3-AGAAACC TCCACACTTC-3'	TCTCACAA	TGCATCTG	TACATAA

Supplementary Table 3. The primer sequences for real-time PCR

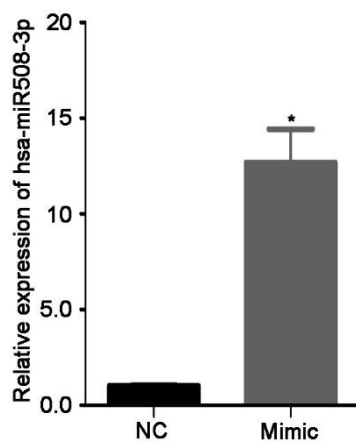
Gene Name	Forward primer sequence	Reverse primer sequence
CircHAS2	5'-TGTACACAGCCTTCAGAGCA-3'	5'-GTGATGCCAAAAAGGCACCAT-3'
β -actin	5'-TGAAGTGTGACGTGGACATC-3'	5' -GGAGGAGCAATGATCTTGAT-3'
GAPDH	5'-TGCACCACCAACTGCTTAGC-3'	5'-TGCACCACCAACTGCTTAGC-3'
U6	5'--CTCGCTTCGGCAGCACA-3'	5'-AACGCTTCACGAATTTGCGT-3'



Supplementary Figure 1 A statistical chart of the subcellular distribution of CircHAS2 in the nucleus and cytoplasm.



Supplementary Figure 2 CircHAS2 knockdown efficiency were identified by qRT-PCR, the expression of CricHAS2 and not the parental gene was changed.



Supplementary Figure 3 The transfection efficiency of the hsa-miR-508-3p mimic

